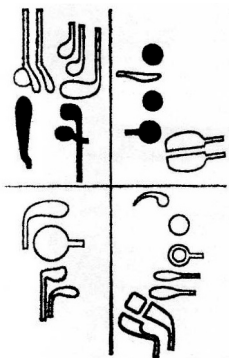
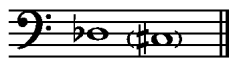


MUSIC AND THE BASSOON

Unit 29

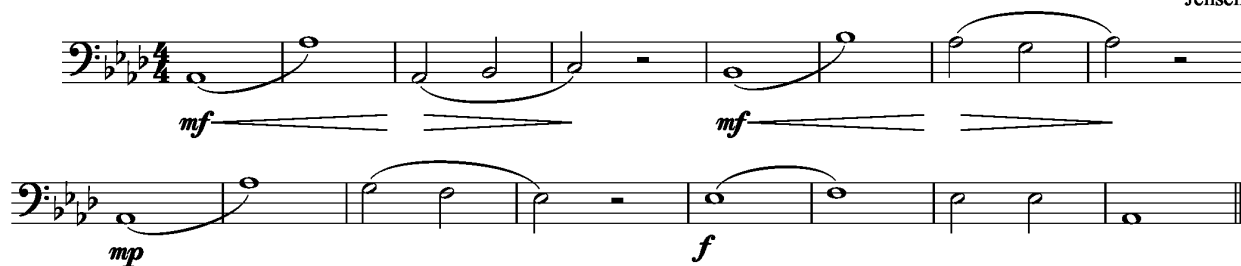
New Note:

Db2(C#2)



1. Ab and Bb Octave Slurs

Jensen



For Db2 (C#2), your left thumb will press the whisper key, the C# key, and the low D key all at once. In order to minimize the amount of movement for your thumb, touch the C# key only with the top edge of your thumb. Press the low D key by slightly collapsing your thumb. As you change from Db to another note that requires only the whisper key with the left thumb, slide the thumb back down, never leaving the whisper key, while arching your thumb back up over the D key.

2. Thumb-work

Jensen

Two staves of music in bass clef, key signature of three flats (B-flat major), and common time. The first staff contains the following notes: whole note B-flat, whole note A-flat, quarter note G, quarter note F, quarter rest, whole note E-flat, whole note D, quarter note C, quarter rest. The second staff contains: whole note B-flat, whole note A-flat, quarter note G, quarter note F, quarter rest, whole note E-flat, quarter note D, quarter note C, whole note B-flat.

3. Ab Major Scale

Jensen

Two staves of music in bass clef, key signature of three flats (B-flat major), and common time. The first staff contains the ascending scale: quarter note B-flat, quarter note A-flat, quarter note G, quarter note F, quarter note E-flat, quarter note D, quarter note C, quarter note B-flat. The second staff contains the descending scale: quarter note B-flat, quarter note A-flat, quarter note G, quarter note F, quarter note E-flat, quarter note D, quarter note C, quarter note B-flat.

4. Uphill Climb

♩ = 72

Jensen

Two staves of music in bass clef, key signature of three flats (B-flat major), and common time. The tempo marking is ♩ = 72. The first staff contains an ascending eighth-note scale: B-flat, A-flat, G, F, E-flat, D, C, B-flat. The second staff contains a descending eighth-note scale: B-flat, A-flat, G, F, E-flat, D, C, B-flat.

5. Ronde

Tielman Susato

The musical score for '5. Ronde' consists of three staves of music. The first staff begins with a bass clef, a key signature of two flats (B-flat and E-flat), and a common time signature (C). The melody is written in a rhythmic pattern of eighth and quarter notes. The second and third staves continue the melody, with the third staff ending with a double bar line and repeat dots.

6. Pavan: The Earl of Salisbury

♩ = 88

William Byrd

The musical score for '6. Pavan: The Earl of Salisbury' consists of four staves of music. The first staff begins with a bass clef, a key signature of two flats (B-flat and E-flat), and a common time signature (C). A tempo marking '♩ = 88' is placed above the first staff. The melody is written in a rhythmic pattern of quarter and eighth notes. The second and third staves continue the melody, with the third staff ending with a double bar line and repeat dots. The fourth staff continues the melody, also ending with a double bar line and repeat dots.

7. Happy Are They

Israeli Canon

Fine

① $\text{♩} = 84$

f (*p* - 2nd time)

②

f *p*

D.C. al Fine

Detailed description: This system contains two staves of music in bass clef, 6/8 time, with a key signature of three flats. The first staff begins with a circled '1' and a tempo marking of quarter note = 84. It contains a single melodic line with a dynamic of *f* (forte) and a first ending bracket. The second staff begins with a circled '2' and contains a single melodic line with dynamics of *f* and *p* (piano). The system concludes with the instruction 'D.C. al Fine'.

8. Canzonetta (Little Song)

Julius Weissenborn

arr. Jensen

$\text{♩} = 72$

Student

mp dolce

Teacher

p *mf* *dolce* *p*

Detailed description: This system contains four systems of music for a duet. The top system is labeled 'Student' and 'Teacher'. The student part is in bass clef, 6/8 time, with a key signature of one sharp and a tempo of quarter note = 72. It starts with a dynamic of *mp dolce* (mezzo-piano dolce). The teacher part is in bass clef, 6/8 time, with a key signature of one sharp. The second system features dynamics of *p* (piano) and *mf* (mezzo-forte). The third system features a *dolce* marking. The fourth system features a *p* marking. The piece concludes with a double bar line and repeat dots.