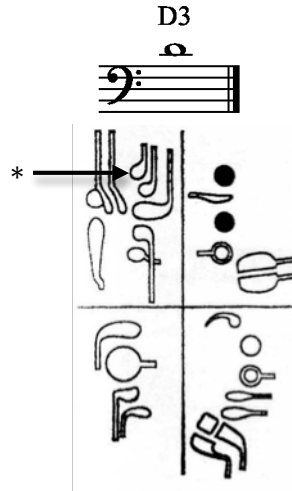


# MUSIC AND THE BASSOON

## Unit 31

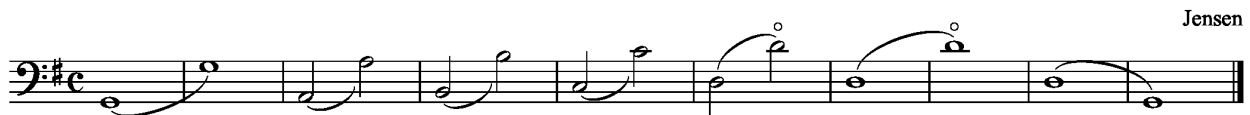
New Note:



\*Flick the key indicated by the arrow when articulating the note or slurring to it from the distance of a major third or larger.

D3 requires flicking only when slurring to it from F2 or lower. When tonguing the D, notice if the beginning of the note cracks. If it does, try flicking it; otherwise it is not necessary to flick when tonguing it (instrument, reed and bocal set-up will affect this note). Use the high D key, the top one on the wing joint, if your instrument has one. If not, you can try flicking the C key, but that might cause the beginning of the note to chirp or be sharp, in which case you should not flick it, and you can get it to speak through strong breath support and a firm embouchure. As you approach D3, as well as the notes around it, raise the back of your tongue as if you were pronouncing the letter "E". This will contribute to a resonant sound on these notes, and keep them from being flat in pitch.

### 1. Octave Slurs G to D



## 2. Porch Swing

Jensen

Musical score for 'Porch Swing' by Jensen. The piece is in bass clef and 6/8 time. It consists of three staves of music. The first staff begins with a treble clef and a key signature of one sharp (F#), then changes to a bass clef. The music features a rhythmic pattern of eighth notes and quarter notes, with many notes marked with a fermata (circled 'o'). The second staff continues the melody with similar rhythmic patterns and fermatas. The third staff concludes the piece with a final cadence.

## 3. G in Thirds

Jensen

Musical score for 'G in Thirds' by Jensen. The piece is in bass clef and 6/8 time. It consists of two staves of music. The first staff features a simple melody of quarter and eighth notes. The second staff provides a harmonic accompaniment in thirds, with notes marked with a fermata (circled 'o').

## 4. Andante

Andante

Julius Weissenborn

Musical score for 'Andante' by Julius Weissenborn. The piece is in bass clef and 4/4 time. It consists of three staves of music. The first staff begins with a treble clef and a key signature of two flats (Bb, Eb), then changes to a bass clef. The tempo is marked 'Andante' and the dynamic is 'mf'. The music features a slow, flowing melody with many notes marked with a fermata (circled 'o'). The second and third staves continue the melody with similar rhythmic patterns and fermatas.

### 5. A Major Scale

Jensen



### 6. The Young Prince and the Princess

from Scheherazade

Nicolai Rimski-Korsakov



### 7. Malbrouck

English Folk Song



# 8. Duet

Joseph Kuffner

Student

Teacher