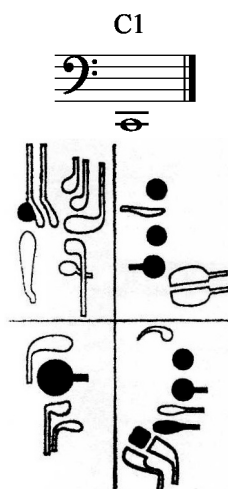


MUSIC AND THE BASSOON

Unit 42

New Note:



Follow the directions to the vibrato exercise from Unit 41. "Sim." stands for "simile" which means "similarly." In this case, continue playing each note with a "sfz."

1. Vibrato Exercise

$\text{♩} = 60$ Jensen

The first vibrato exercise is written in bass clef, 4/4 time. It consists of two staves. The first staff has a tempo marking of quarter note = 60. The first measure is marked *sfz*, the second *sfz*, and the rest of the staff is marked *sim.*. The notes are quarter notes with slurs over them. The second staff continues the exercise with eighth notes, also with slurs, and includes triplets of eighth notes marked with a '3' below them.

2a. C# Natural Minor

Jensen

The second vibrato exercise is written in bass clef, 2/4 time, with a key signature of two sharps (F# and C#). It consists of two staves. The first staff starts with a half note, followed by eighth notes, and includes triplets of eighth notes marked with a '3' below them. The second staff continues the exercise with eighth notes and includes triplets of eighth notes marked with a '3' below them.

2b. C# Melodic Minor

Jensen



2c. C# Harmonic Minor

Jensen

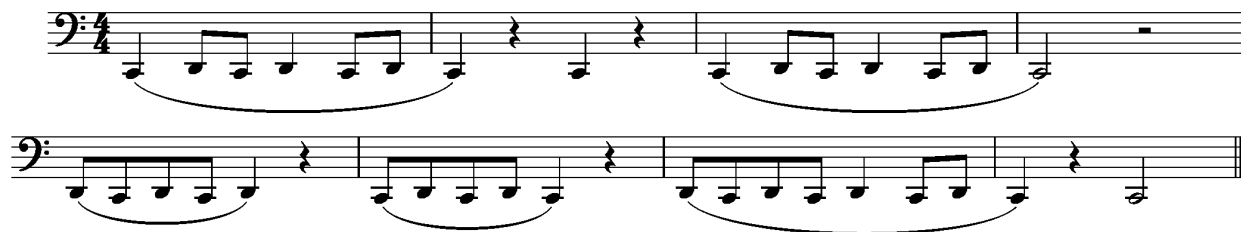


When playing C1, press the low C key with the middle of your left thumb so that the tip of your thumb is arched upwards, ready to reach other keys. Playing between C1 and D1, simply slide the thumb on those keys, keeping it in contact with the instrument. To help the low notes respond, pronounce the “O” vowel, roll out your bottom lip a bit, and drop your jaw. Keep the tongue gentle as you let the air energize the initiation of the tone. If the instrument does not respond easily, it could have leaking pads or your reed might be too open. If that is the case, close the aperture a bit by pinching the first (top) wire top to bottom.

3. Breathin' Easy

Allegro e legatissimo

Duke



Identifying the patterns in this etude will help you learn it quicker.

4. Etude in C Major

Julius Weissenborn

The musical score for 'Etude in C Major' by Julius Weissenborn is written in bass clef with a 3/4 time signature. It consists of six staves of music. The piece is characterized by a continuous pattern of eighth-note triplets, often grouped with slurs. The first staff begins with a triplet of eighth notes (C4, D4, E4) and continues with similar patterns. The second staff introduces a triplet of eighth notes (F4, G4, A4). The third staff features a triplet of eighth notes (B4, C5, B4). The fourth staff continues with a triplet of eighth notes (A4, G4, F4). The fifth staff shows a triplet of eighth notes (E4, D4, C4). The sixth staff concludes with a triplet of eighth notes (B3, A3, G3). The piece ends with a double bar line.

5. Etude on the Chromatic Scale

Jensen

The musical score for 'Etude on the Chromatic Scale' by Jensen is written in bass clef with a 4/4 time signature. It consists of three staves of music. The piece is a chromatic scale exercise, featuring a continuous sequence of eighth notes moving up and down the scale. The first staff starts with a chromatic scale from C4 to C5 (C4, C#4, D4, D#4, E4, E#4, F4, F#4, G4, G#4, A4, A#4, B4, B#4, C5). The second staff continues the chromatic scale from C5 down to C4 (C5, B#4, B4, A#4, A4, G#4, G4, F#4, F4, E#4, E4, D#4, D4, C#4, C4). The third staff continues the chromatic scale from C4 down to B3 (C4, B#3, B3, A#3, A3, G#3, G3, F#3, F3, E#3, E3, D#3, D3, C#3, C3, B3). The piece ends with a double bar line.

6. Minuet

Franz Joseph Haydn

Musical score for Minuet by Franz Joseph Haydn, bass clef, 3/4 time signature. The score consists of three staves. The first staff begins with a dynamic marking of *f* (forte), followed by *p* (piano) and *f*. The second staff includes a triplet of eighth notes marked with a '3' and a dynamic marking of *p*, followed by *mp* (mezzo-piano). The third staff features a dynamic marking of *f* and a triplet of eighth notes marked with a '3'.

7. Das Kinderspiel, K. 598

W.A. Mozart

$\text{♩} = 138$

Musical score for Das Kinderspiel, K. 598 by W.A. Mozart, alto clef, 3/8 time signature. The score consists of two staves. The first staff begins with a tempo marking of $\text{♩} = 138$. The second staff continues the melodic line.

8. Duet

Moderato

Julius Weissenborn

Musical score for Duet by Julius Weissenborn, bass clef, 4/4 time signature. The score is presented as a duet for Student and Teacher. The Student part is on the upper staff, and the Teacher part is on the lower staff. Both parts begin with a dynamic marking of *mf* (mezzo-forte). The score consists of two systems of staves.